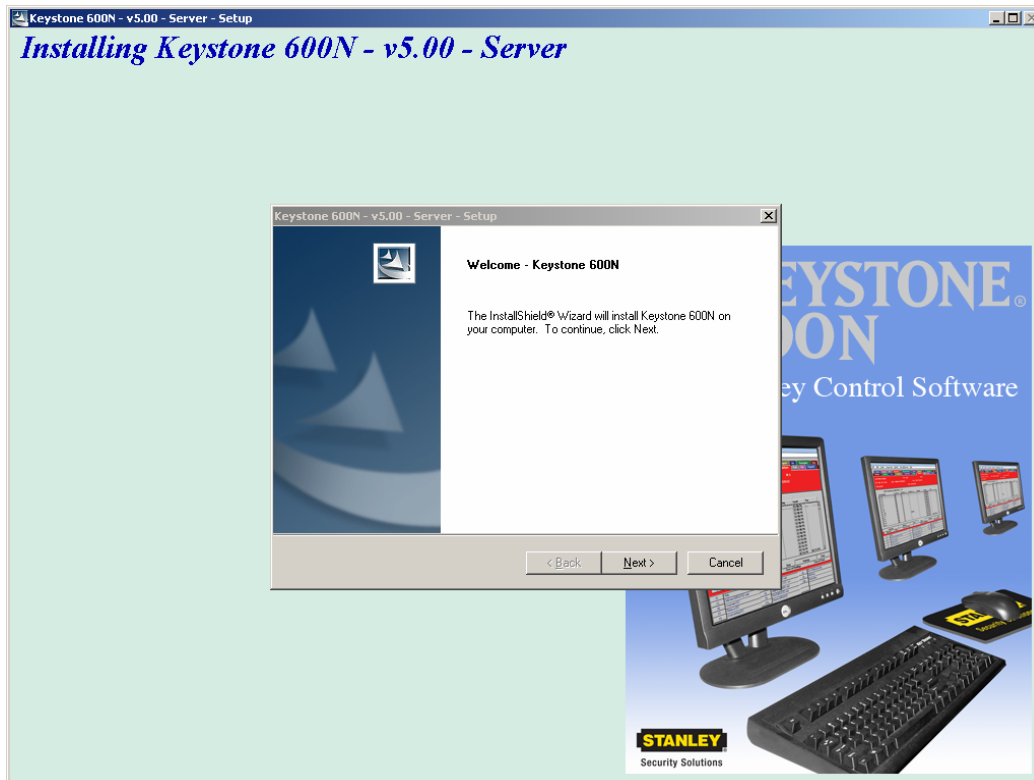


Keystone® 600N5 SERVER and STAND-ALONE INSTALLATION INSTRUCTIONS

The following instructions are required for installation of Best Access System's Keystone® 600N5 (KS600N) network key control software for the server side. **Please see the system requirements on the Keystone® 600N5 Client Installation Instruction sheet before using these instructions.**

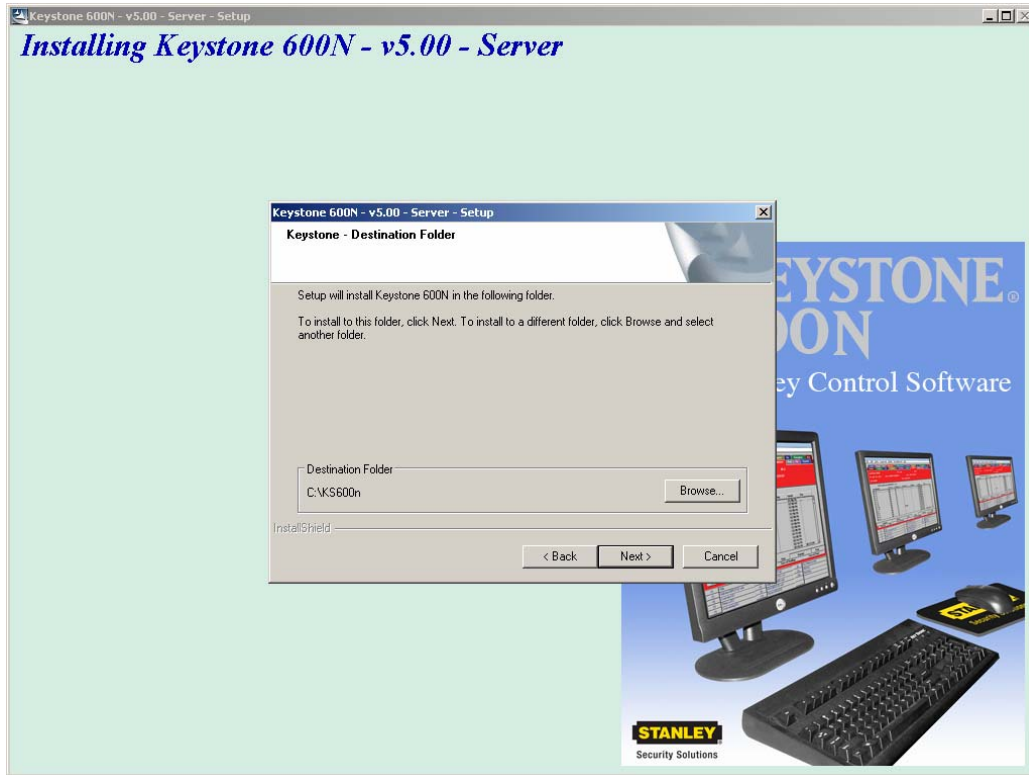
NOTE: IF USING THE NETWORK UPGRADE FROM KEYSTONE 600 V3.53 OR KS600N V4.20, THIS INSTALLATION WILL CONVERT YOUR EXISTING DATA.

1. Put installation CD in CDROM drive (Auto-run)
2. At the "Welcome to Setup" screen, click **NEXT**.



Keystone® 600N5 SERVER and STAND-ALONE INSTALLATION INSTRUCTIONS

3. At the “Destination Folder” screen (Below), we strongly recommend the default **(C:\KS600N)**. **Note:** Install program **only** allows installation on the server’s partitioned drives (C:, D:, etc.). Click **NEXT**.



4. At the “Search for Original Keystone 600 Folder”, select **NO** if this is a **new** program. If your original Keystone 600 folder is in another location, select **YES** and locate your original Keystone 600 folder.



Note: The screen above will be displayed if the install is new **or** if a previous version of Keystone 600 was not installed at the path of C:\KS600WIN or c:\KS600N. The most reliable way to have your data converted from these older versions is to have them installed already on the root drive of the server.

- I. **KS600 v3.53.** The KS600 v3.53 should be installed on the server’s root drive (C:\KS600WIN). Make sure the program launches before you begin the KS600N5 installation, then exit. If the program is in a different location, copy the KS600WIN folder to the root drive of the server temporarily (C:\KS600WIN), make sure you can launch the program then install the KS600N5. If the program does not launch, delete the Vista.Taf file from the KS600WIN folder and then test launch the program, then exit.
- II. **KS600N v4.20.** The KS600N v4.20 should be installed on the server’s root drive (C:\KS600N). Make sure the program launches before you begin the KS600N5 installation, then exit. If the KS600N v4.20 is at another location, Install the KS600N v4.20 on the server’s root (C:\KS600N – the default folder for the install), then copy the contents of the data folder (All of the files inside the DATA folder) to the C:\KS600N\DATA folder on the server, overwriting the blank files that the install created. **IF YOU HAVE MORE THAN 1 DATABASE IN YOUR KS600N PROGRAM, PLEASE CALL YOUR BEST ACCESS SYSTEMS REP.**

Keystone® 600N5 SERVER and STAND-ALONE INSTALLATION INSTRUCTIONS

The process will load application files and proceed through the data export. The Import conversion process may take several minutes, depending on the size of your previous database. If you do not have an existing program, the process will perform quickly.

- 4b. The “Would you like to share Client Install Folder” will be displayed next. Select the **YES** option (Required if the program is to be installed on other Client workstations.).

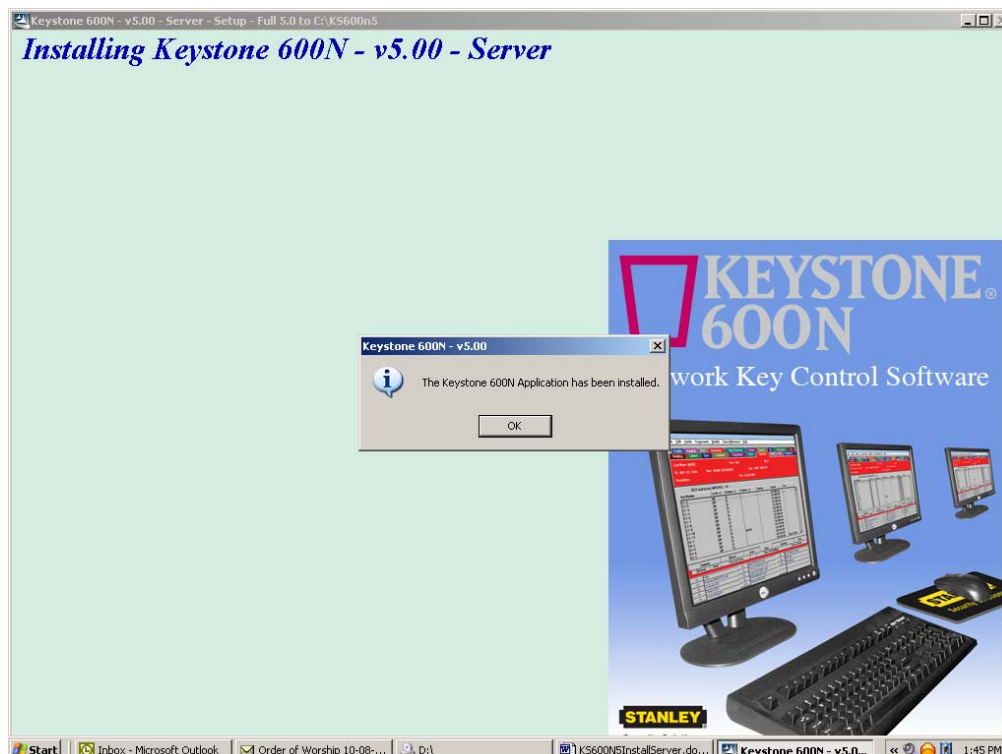


Keystone® 600N5 SERVER and STAND-ALONE INSTALLATION INSTRUCTIONS

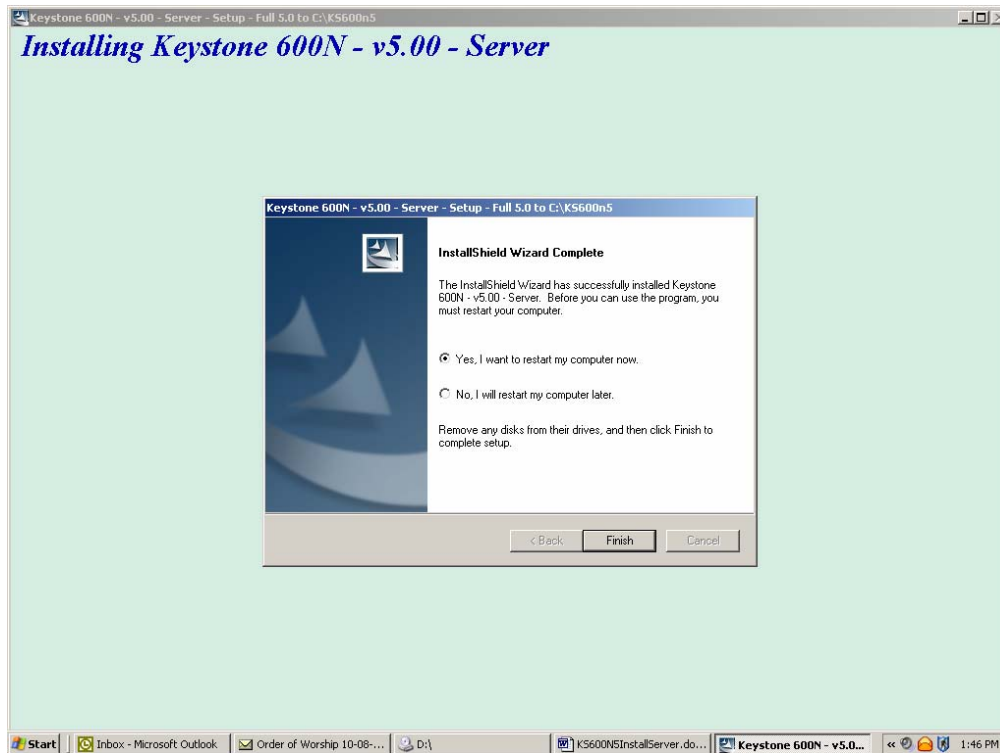
5. After copying the program and database files, the install will prompt you to install an icon on your desktop (**Strongly Recommended**). Click the **YES** button.



6. The install will then let you know that the Keystone® 600N5 application has been installed – Click **OK**.



7. You will be prompted by the install to “Restart your computer now.” You **MUST** RESTART computer before using KS600N on the server. Click **FINISH**.



You have completed the install. Before you install the Client, double-click on the Keystone® 600N5 icon on your desktop to confirm you have access (Login: **BEST** / Password: **BEST**). If you get an error, you must restart your computer. If not, then you're ready for the Client install and you do not have to restart your computer.

Backups

You can only backup from the **SERVER** program (Or Stand-Alone). The backup utility (In the Customer Facility Card, Click on CTRL + F5) will backup your database to any mapped drive. Just select the drive where you would like to backup your data, and click on “Start Backup”. The backup utility will compress your data into a single file and backup to /KS600N/BACKUP folder on whatever drive you choose (e.g. If you choose the “K” drive the utility will create the folder K:\KS600N\BACKUP and backup your data to that path). The backup file is in “zipped” format.

We recommend a flash drive for stand-alone users. Most multi-user environments will have the server application on the physical server, which is usually backed up routinely, so there is no need for using our backup utility.

Keystone 600N5 Client Installation Instructions

Keystone® 600N5 SERVER and STAND-ALONE INSTALLATION INSTRUCTIONS

The following instructions are required for the proper installation of Best Access System's Keystone 600N5 (KS600N5) network key control software for the client PC. Please see the system requirements before using these instructions.

IMPORTANT: Your network technician must do this install procedure.

Please note that the KS600N5 program **must already be installed** on the server using the KS600N5 Server Installation Instructions before beginning this procedure.

1. At the Windows Desktop, Double-click the Network Neighborhood Icon.
2. Double-click the: Entire Network Icon (If you know where the KS600N5 Client shared folder is located, go to number 5 below).
3. Double-click the Icon with the correct server name (This is where the KS600N5 Server Install was installed).
4. Double-click the Icon with the computer name under it (This is where the KS600N5 server program was installed).
5. Double-click the Client folder.
6. Double-click the Setup.exe Icon. After a few seconds the Install Shield process will begin.
7. Click the Next button at the Welcome – Keystone 600N5 screen.
8. Click the Next button at the Destination Folder screen. We strongly recommend installing the program in the default folder (C:\KS600N5) or your local drive.
9. The program will now install on your local client machine. When it is finished, click the Yes button to add an icon to your desktop.
10. Click the OK button at the Keystone 600 Has Been Installed screen.
11. Select the: No, I will restart my computer later option, then click the Finish button and close the Client Install window.

Note: If you have a problem starting or running the KS600N5 program, please go ahead and restart your computer, then try again.

The program is now finished installing. Please check the following carefully.

1. Start the Keystone 600N5 program on the client machine and be sure everything works and your data is displayed in the Employee cards and or Door cards.
2. Be sure the user has proper workstation level security rights to log into the client machine and use the Keystone 600N5 program (Specifically, read/write rights to the **KS600N** folder).

Hardware Requirements:

Server Requirements - Windows NT, 2000, 2003 or XP Pro with TCPIP protocol

- **SERVER MUST HAVE STATIC IP ADDRESS**
- XP Service Pack 2 Local Firewall must be TURNED OFF
- Must Install Server application on PARTITIONED Drive only!

Client Minimum Requirements – Windows NT, 2000 or XP Pro, 2003 Server with Pentium Processor, 128 MB Memory, 80 MB Hard drive space.

Client Recommended Hardware Requirements for maximum performance – Pentium 4 processor, 512-1024MB Memory, 200 MB Hard Disk space.