

MultiMag® for outswinging doors

SINGLE DOORS

BML-8310

BML-8310SCS

(Security condition sensor)

BML-8310DSS

(Door status sensor)

BML-8310DSSSCS

(Door status and security condition sensors)

DOUBLE DOORS

BML-8320

BML-8320SCS

(Security condition sensor)

BML-8320DSS

(Door status sensor)

BML-8320DSSSCS

(Door status and security condition sensors)



These hard-working multi-purpose electromagnetic locks enhance building security and install quickly.

Several standard features make these magnets the “workhorse” of the industry. The adjustable mounting bracket has been enhanced with keyhole mounting to support the magnet’s weight during initial installation, freeing the installer’s hands to affix the magnet mounting screws. The removable cavity cover offers quick, easy access to wiring.



Energy
230mA¹
Auto-Sensing 12-24VDC



Fire-Rated
CAN/ULC S104
UL 10C 1-1/2-Hours



Strength
Up to 1,200lbf Holding Force
(Each Electromagnet)



Monitoring
Optional Door Status Sensor
(DSS)/Security Condition
Sensor (SCS) Available



Warranty
Lifetime Limited Warranty

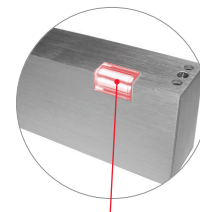


Mode
Fail-Safe

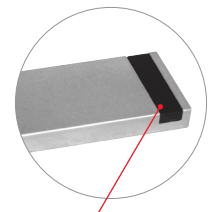
Electromagnetic Locks

Easy, affordable and versatile.

From keyhole mounting to the removable cavity cover to the built-in adjustable time delay, the BEST MultiMag® proves why it's the industry workhorse.



LED Indicator
(for models with SCS only)



Magnetic Door Contact
(for models with DSS only)

Product specifications

	BML-8310	BML-8320
Housing dimensions	1-5/8" (41mm) x 2-7/8" (73mm) x 10-1/2" (268mm) DWL Dimensions include 1/4" (6mm) housing bracket	
Armature plate dimensions	Standard: 5/8" (16mm) x 2-3/8" (61mm) x 7-7/16" (190mm) DWL* Optional: 3/8" (10mm) X 2-3/8" (61mm) x 7-7/16" (190mm) DWL*	
Voltage	Field selectable 12/24VDC; Tolerance ±10%	
Power/current requirements	Max 0.23A at 12VDC; Max 0.13A at 24VDC (each lock)	
Holding force	Up to 1200 lbf (one point locking)	Up to 1200 lbf each point (two point locking)
Output relays	SCS (with LED)—SPDT 1.25A at 24VDC DSS—SPDT 0.20A at 12VDC and 0.12A at 24VDC	
Wiring requirements	2 wires-power input Up to 4 wires output	2 or 4 wires-power input 4 or 8 wires output
Adjustable time delay	1-35 seconds	
Operating temperature	14° to 140° F (-10° to 60° C)	
Finishes	28 Brushed Anodized Aluminum (630) 40 Brushed Anodized Dark Bronze (690)	
Monitoring options	SCS—Security Condition Sensor (includes LED indicator) with low-voltage detection; DSS—Door Status Sensor	
Warranty	Lifetime Limited Warranty	
Certifications	UL 294 Special Locking Arrangement Component (6th Edition) CAN/ULC S104 Auxiliary Locks Listed for fire doors rated up to 1-1/2 hours UL 10C Auxiliary Locks Listed for fire doors rated up to 1-1/2 hours	

Optional accessories†

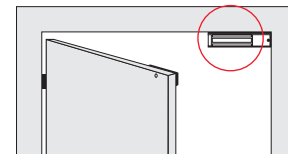
	BML-TJ10	BML-TJ20
Z-bracket kit		
Split armature plate	BML-SA138 3/8" (9.5mm) BML-SA158 5/8" (16mm)	
Glass door bracket	BML-GB8112 1/2" (13mm) BML-GB8134 3/4" (19mm)	BML-GB8212 1/2" (13mm) BML-GB8234 3/4" (19mm)
Armature plate holder	BML-AH10 BML-AH15 for 8310DSS	BML-AH20 BML-AH25 for 8320DSS

Features

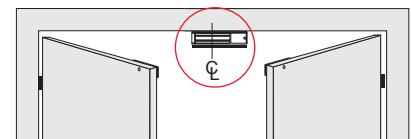
BEST MultiMag®

- **Available with optional sensors:** Security Condition (SCS) and /or Door Status Sensors (DSS)
- **Built-in time delay:** instant release with adjustable relock, programmable from 0-35 seconds
- **Surge protection**
- **Engineered to overcome residual magnetism**
- **Designed for easy installation**
- **Keyhole mounting** with stabilizing 4-bolt "drop stop"
- **Easy-access wiring cavity**
- **Convenient plug-in wiring terminals**
- **Includes:** Teks® self-drilling fasteners; 5/8" (16mm) armature plate and paper template
- **Built-to-last:** limited lifetime warranty

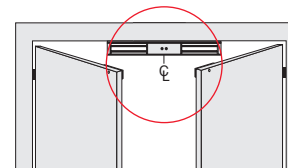
Installation



BML-8310 Typical Installation



BML-8310 Split Armature Installation



BML-8320 Typical Installation



¹ Max at 12VDC for BML-8310, 460mA for BML-8320
* DSS armature plate dimensions are 5/8" D x 2-3/8" W x 10" L (16mm x 61mm x 262 mm) and 3/8" D x 2-3/8" W x 10" L (9.5mm x 61mm x 252mm)
† Accessories may impact holding force

Choose BEST Electromagnetic Locks for a solution that you can trust.

bestaccess.com

dormakaba

BEST is a trademark of dormakaba USA Inc. All rights reserved.



BA-0343
© 2018 dormakaba USA Inc.